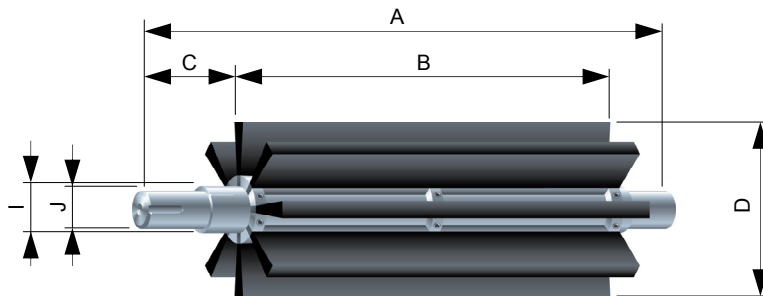


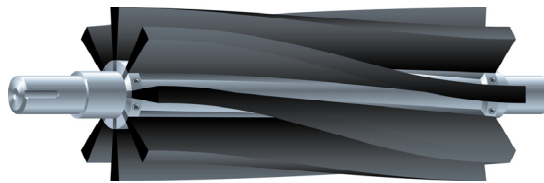
# KEZSTRIP

## Axial and helical strip rollerbrush

Available in two configurations with brushstrips mounted axially or twisted helically around the roller core.. Particularly suited to conveyor belt cleaning, the open brush construction helps prevent clogging which may occur with scraper type cleaners. Simple assembly enables easy replacement of the brushstrips without dismantling the whole roller assembly.



**TYPE 38**  
AXIAL STRIP ROLLERBRUSH



**TYPE 55**  
HELICAL STRIP ROLLERBRUSH

### Features

- Simple and economic strip replacement
- Easy to maintain
- Open construction reduces clogging

ROLLERBRUSH DIMENSIONS						FILL MATERIALS			
Type	Brush diameter		Brush face		Axial strips	Synthetic		Steel wire	
	D (Min)	D (Max)	B (Min)	B (Max)		Min	Max	Min	Max
3806	150.00	200.00	150.00	2000.00	6	0.06	1.40	0.06	0.56
3808	200.00	300.00	150.00	2000.00	8				
5506	150.00	200.00	550.00	2500.00	6				
5508	200.00	250.00	550.00	4000.00	8				
5512	220.00	250.00	550.00	4000.00	12				

Dimensions are in mm



Kleeneze Sealtech Limited  
Ansteys Road  
Hanham  
Bristol  
BS15 3SS  
UK

T: +44 (0)117 958 2450  
F: +44 (0)117 960 0141  
E: sales@ksltd.uk.com  
www.ksltd.com

## KEZSTRIP

### How to specify Type 38 axial strip rollerbrush

Specify the following together with additional requirements according to your application:

- ▶ Brush type
- ▶ Fill material
- ▶ Length (A)
- ▶ Brushface (B)
- ▶ Brush position (C)
- ▶ Brush diameter (D)
- ▶ Core diameter (I)
- ▶ Shaft detail (J)

### How to specify Type 55 helical strip rollerbrush

Specify the following together with additional requirements according to your application:

- ▶ Brush type
- ▶ Fill material
- ▶ Length (A)
- ▶ Brushface (B)
- ▶ Brush position (C)
- ▶ Brush diameter (D)
- ▶ Core diameter (I)
- ▶ Shaft detail (J)
- ▶ Pitch (G)
- ▶ RH or LH helix

### Technical notes

#### Fill materials

To ensure best performance, the selection of the fill material is of paramount importance. Characteristics such as bend recovery, resistance to abrasion and chemicals are available on request. Minimum orders may apply on certain materials and colours.

#### SYNTHETICS

**NYLON** - Durable general purpose filament with good bend recovery, flex life and abrasion resistance. Max temp 120°C. Available in heat stabilised grades.

**NYLON CONDUCTIVE** - Properties of standard Nylon with a conductive coating for anti-static applications.

**NYLON FR(H)** - Fire retardant Nylon with low smoke density and zero halogens.

**NYLON ABRASIVE** - Abrasive impregnated filament for deburring and cleaning. Good fatigue and chemical resistance. Grit size 60 - 800 (SIC) or (ALO)

**POLYPROPYLENE** - Good chemical resistance with less water absorption than Nylon. Max temp 60°C.

**POLYESTER** - Excellent filament with good stiffness, bend recovery and abrasion resistance. Particularly suitable for wet applications. Max temp 100°C

#### NATURAL MATERIALS

**HORSEHAIR, BRISTLE, and GOAT HAIR** - Excellent resistance to taking a set, good bend recovery and resistance to sunlight. Soft to medium stiffness.

#### METALLICS

**STEEL** - Crimped or flat wire.

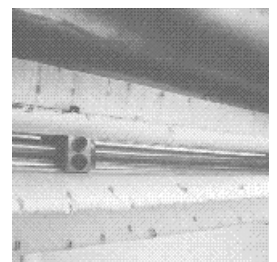
**STAINLESS STEEL** - Crimped wire AISI304

**PHOS BRONZE, BRASS, NI SILVER** - Crimped wire



Kleeneze Sealtech Limited  
Ansteys Road  
Hanham  
Bristol  
BS15 3SS  
UK

T: +44 (0)117 958 2450  
F: +44 (0)117 960 0141  
E: sales@ksltd.uk.com  
www.ksltd.com



Conveyor belt cleaning with an axial strip roller prevents build-up of material deposits, increases belt life and reduce breakdowns