

Product
Information



For more information
Phone

0117 958 2450

Or visit

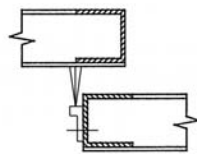
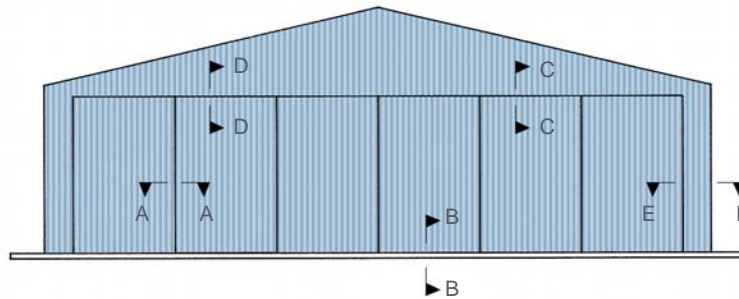
www.ksltd.com

SUPERSEAL

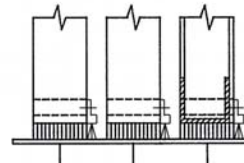
Seals for industrial doors

Sliding and hinged doors

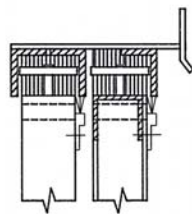
Superseal brushstrip seals provide an effective solution for the demands and rigours of industrial sliding and hinged doors. From corrugated and fabricated surfaces through to stone, brickwork and uneven ground surfaces, brushstrip provides a durable and flexible seal



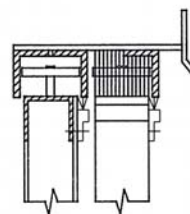
Section A-A



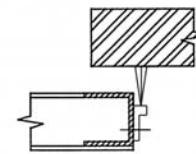
Section B-B



Section C-C



Section D-D



Section E-E



Superseal 180°

Hangar sliding steel door

Threshold: Superseal 180°
Top/lintel: Superseal 180°
Sides: Superseal 180°
Centre: Superseal 180°

Kleeneze Sealtech Limited

Ansteys Road, Hanham
Bristol BS15 3SS

Tel +44 (0)117 9582450

Fax: +44 (0)117 960 0141

Email: sales@ksl.uk.com

Web: www.ksltd.com

How to specify

Refer to the illustration guides to determine the type of seal required. Select the size of seal according to the width of gap to be sealed. Seals should be fitted with the tips of the filaments in firm contact with the mating surface, but barely flexed.

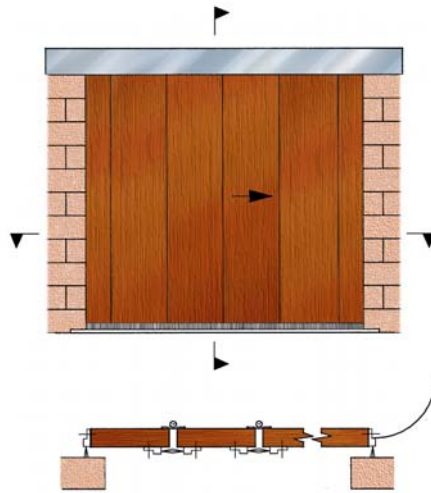
Product
Information



For more information
Phone
0117 958 2450
Or visit
www.ksltd.com

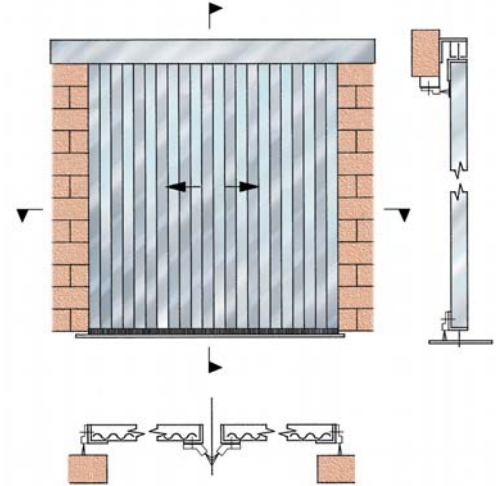
SUPERSEAL

Seals for industrial doors



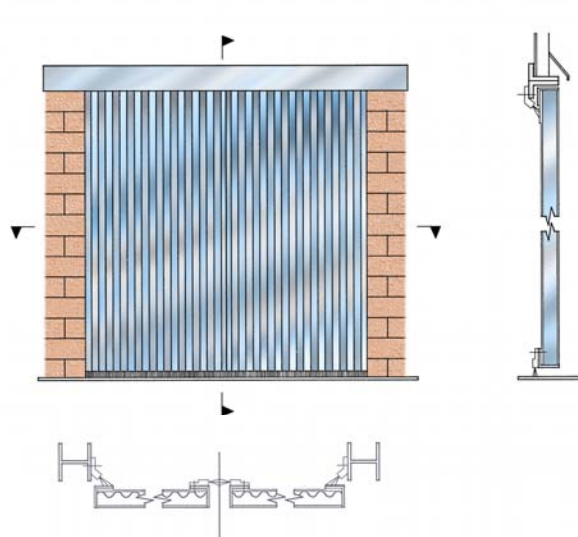
Radius tracked timber sliding door

Threshold: Superseal 180°
Top/lintel: Superseal 180° (fix to lintel)
Sides: Superseal 180°
Centre: Superseal 180° opposing



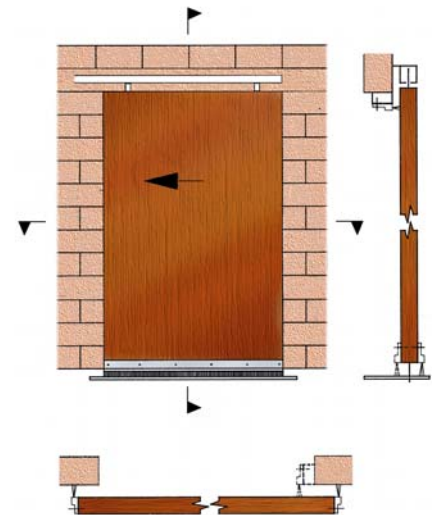
Steel sliding door

Threshold: Superseal 180°
Top/lintel: Superseal 180° (fix to lintel)
Sides: Superseal 180°
Centre: Superseal 45° opposing



Steel sliding door

Threshold: Superseal 180°
Top/lintel: Superseal 45° (fix to lintel)
Sides: Superseal 45°
Centre: Superseal 180° opposing



Steel hinged door

Threshold: Superseal 180°
Top/lintel: Superseal 180° (fix to lintel)
Sides: Superseal 180°

Kleeneze Sealtech Limited

Ansteys Road, Hanham
Bristol BS15 3SS

Tel +44 (0)117 9582450

Fax: +44 (0)117 960 0141

Email: sales@ksl.uk.com

Web: www.ksltd.com

Product
Information



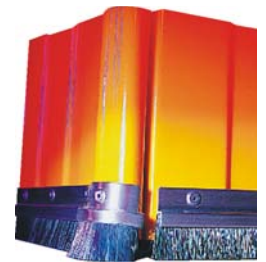
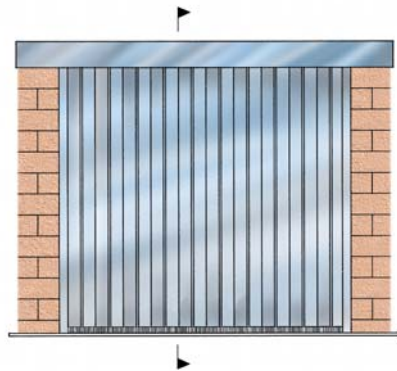
For more information
Phone
0117 958 2450
Or visit
www.ksltd.com

SUPERSEAL

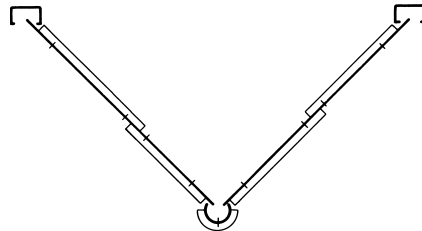
Seals for industrial doors

Folding shutter doors

Specially prepared kits comprising pre-cut lengths of Superseal and shaped nosing pieces are available to suit most makes of folding shutter door.

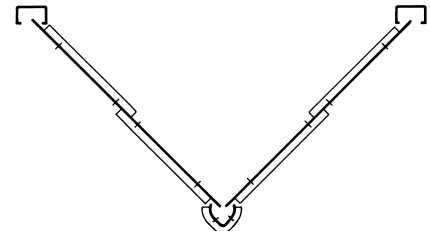


Folding shutter door kit



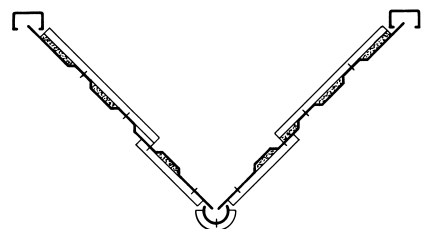
Kit type A

Half panel width sections and rounded nosing piece
Available in 230mm and 305mm panel kits,
to seal gaps up to 25mm



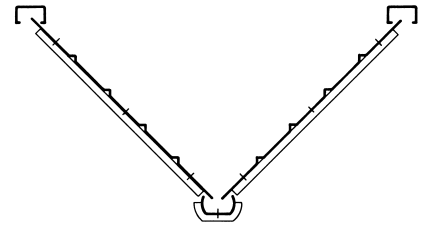
Kit type B

Half panel width sections and pointed nosing piece
Available in 230mm and 305mm panel kits,
to seal gaps up to 25mm



Kit type C

Offset length panel section to suit deep profiled door
panels and rounded nosing piece
Available in 230mm and 305mm panel kits,
to seal gaps up to 25mm



Kit type D

Full panel width sections and flattened nosing piece
Available in 230mm and 305mm panel kits,
to seal gaps up to 25mm

Kleeneze Sealtech Limited

Ansteys Road, Hanham
Bristol BS15 3SS
Tel +44 (0)117 9582450
Fax: +44 (0)117 960 0141
Email: sales@ksl.uk.com
Web: www.ksltd.com

How to specify

Refer to the illustration guides to determine the type of kit required.

Specify the number of pairs of door panels.
1 kit will seal the top or bottom of 1 pair of door panels as illustrated.

Product Information



For more information
Phone

0117 958 2450

Or visit

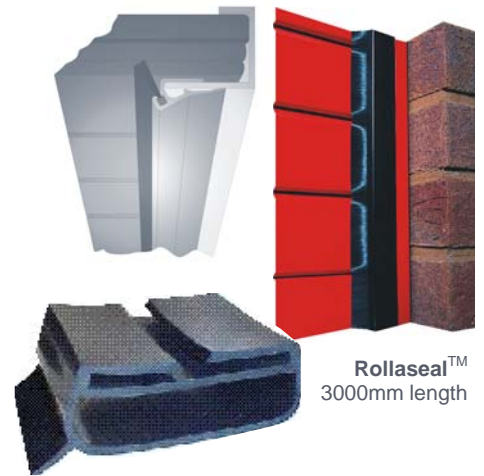
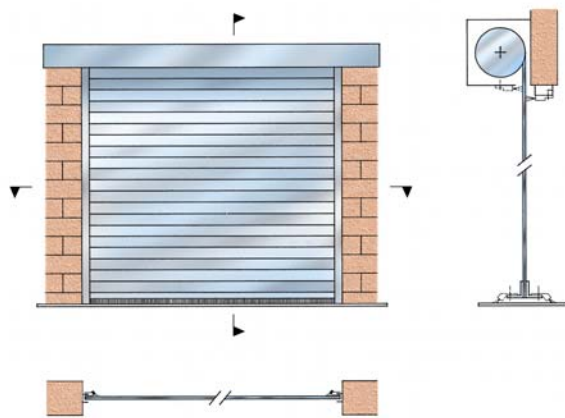
www.ksltd.com

SUPERSEAL

Seals for industrial doors

Roller and garage doors

Gaps around roller doors are effectively sealed using clip-on Rollaseal™, preventing draughts, vermin and door rattle within the guide channels. To complete the all round seal, use Bumperseal along the bottom rail and Superseal 180° across the lintel.

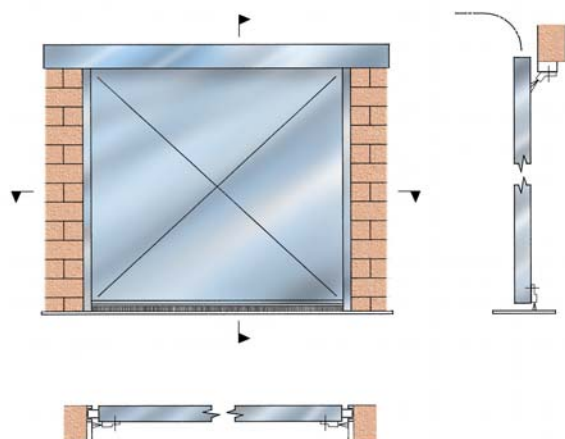


Rollaseal™
3000mm length

Bumperseal
10m roll

Roller doors

Side guide channels:	Rollaseal™
Bottom:	Bumperseal or Superseal
Top:	Superseal 180°



Up and over garage door

Bottom:	Superseal 180°
Top/lintel:	Superseal 45°
Sides:	Superseal 180°

Kleeneze Sealtech Limited

Ansteys Road, Hanham
Bristol BS15 3SS

Tel +44 (0)117 9582450

Fax: +44 (0)117 960 0141

Email: sales@ksl.uk.com

Web: www.ksltd.com